

## 150W Balcony semi-flexible solar panel

### Warranty

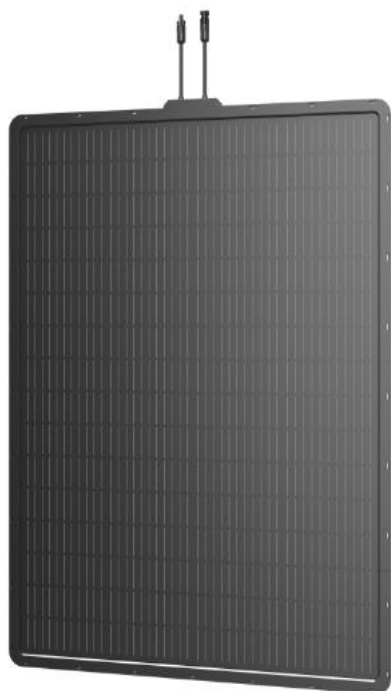
- ◆ 2 years Manufacturer Warranty

### Manufacturing

- ◆ Original cell sorting system ensures the best electric cell match
- ◆ EL-Testing before packing.
- ◆ Comprehensive module power testing.

### Performance

- ◆ Upgraded efficiency and unprecedented flexibility.
- ◆ Weakened hot-spot effect, extremely low risk of micro cracks and increased stability by shingle-tech.
- ◆ Special connection method lowers the internal resistance and ensures better performance than traditional connection with busbar.
- ◆ IP67 rated junction box, reliable cables and standard MC4 connectors improve the stability



### Mechanical Data

Standard Test Conditions AM=1.5, E=1000W/m<sup>2</sup>, TC=25°C

Nominal Power	150W
Cell Type	Monocrystalline
Model of Cells	182mm
Maximum Power Current (Impp)	6.47A
Maximum Power Voltage (Vmpp)	23.2V
Open-circuit Voltage (Voc)	27.2V
Short-circuit Current (Isc)	6.86A
Maximum System Voltage	200V
Output Tolerance	±3%
Cable	900mm / 2.5mm <sup>2</sup>
Connector Type	MC4 / MC4 Compatible
Module Structure	Frame/CPC/ EVA / Backsheet
Junction box rating	≥ IP67
Diode	✓
Working Temperature	-20°C ~ +65°C

### Packaging

Module Dimensions	1088*800*16mm
Module Weight	4.3kg
Package	Single Package
Pieces per Pallet	30
Gross Weight per Pallet	155kg
Pallet Dimensions	1200*1100*930mm

**SOLMAX NEW ENERGY B.V.**

Address: Zonnebaan 23, 3542 EB Utrecht, the Netherlands

Tel: +31-307855708

Email: info25@solarfam.nl